

SONOMA ISLES

LYING IN SECTION 32, TOWNSHIP 40 SOUTH, RANGE 42 EAST AND SECTION 5, TOWNSHIP 41 SOUTH, RANGE 42 EAST,
TOWN OF JUPITER, PALM BEACH COUNTY, FLORIDA, BEING A RE-PLAT OF TRACT B, E, H, LK-3, PARCEL 1 AND A PORTION OF TRACT A (MARSALA COURT),
PLAT OF PARCEL 19 NORTH - PUD, AS RECORDED IN PLAT BOOK 109, PAGES 176 THROUGH 193, INCLUSIVE, PUBLIC RECORDS OF PALM BEACH COUNTY, FLORIDA
SHEET 7 OF 13 SEPTEMBER, 2015

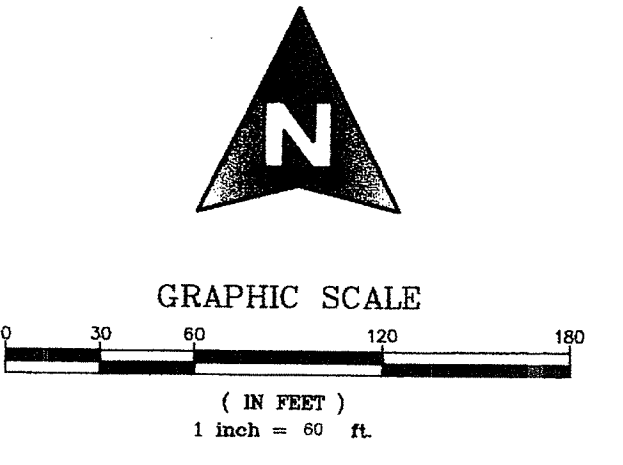
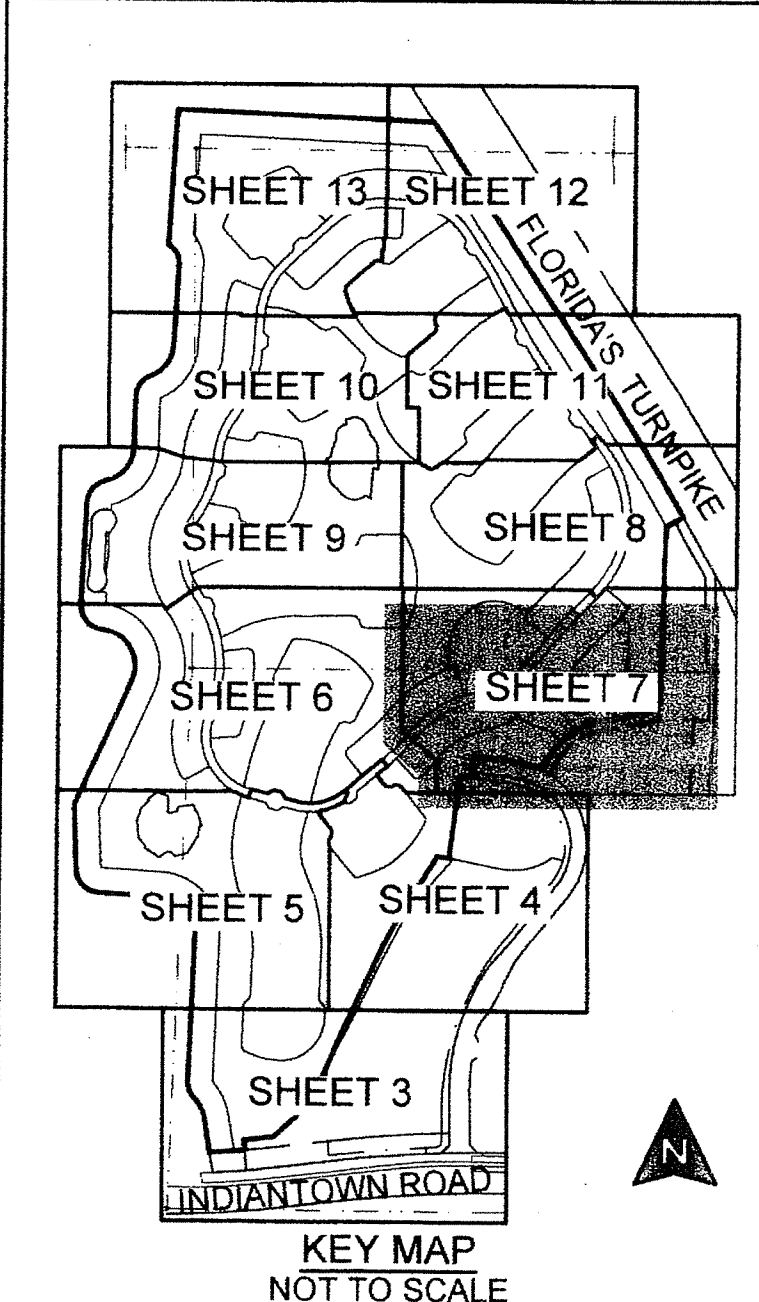
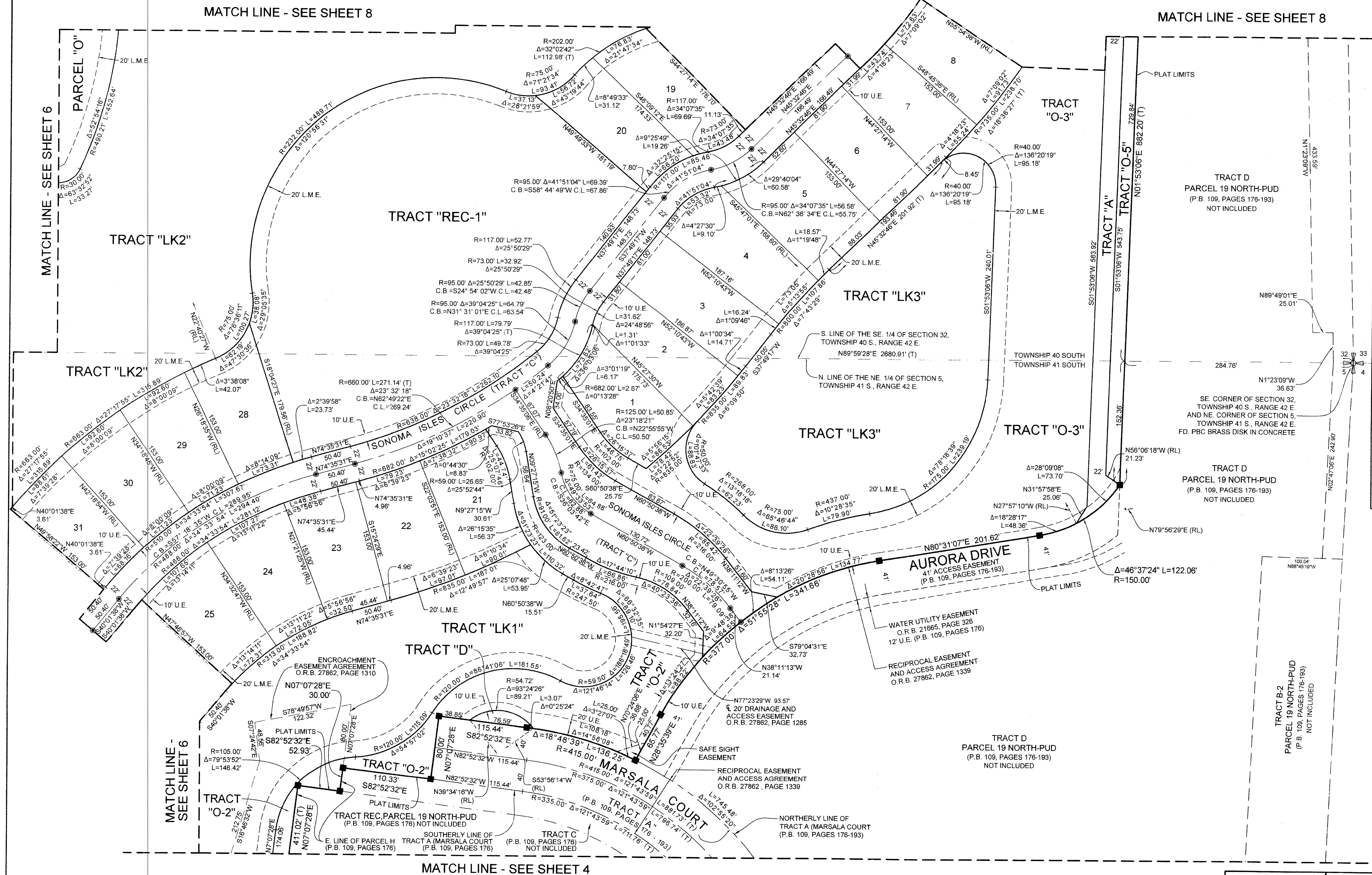
173

COUNTY OF PALM BEACH)
STATE OF FLORIDA) SS

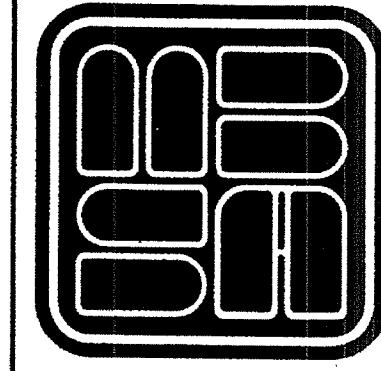
THIS PLAT WAS FILED FOR RECORD AT)
M. THIS) DAY OF)
2015, AND DULY)
RECORDED IN PLAT BOOK NO.)
ON PAGE) THRU)

SHARON R. BOCK,
CLERK AND COMPTROLLER

BY: _____ D.C.



SHEET 7 OF 13



MICHAEL B. SCHORAH & ASSOCIATES, INC.
1850 FOREST HILL BLVD., SUITE 208
WEST PALM BEACH, FLORIDA 33406
E# 2438 TEL. (561) 968-0060 FAX. (561) 642-9726 LB# 2438

SONOMA ISLES